

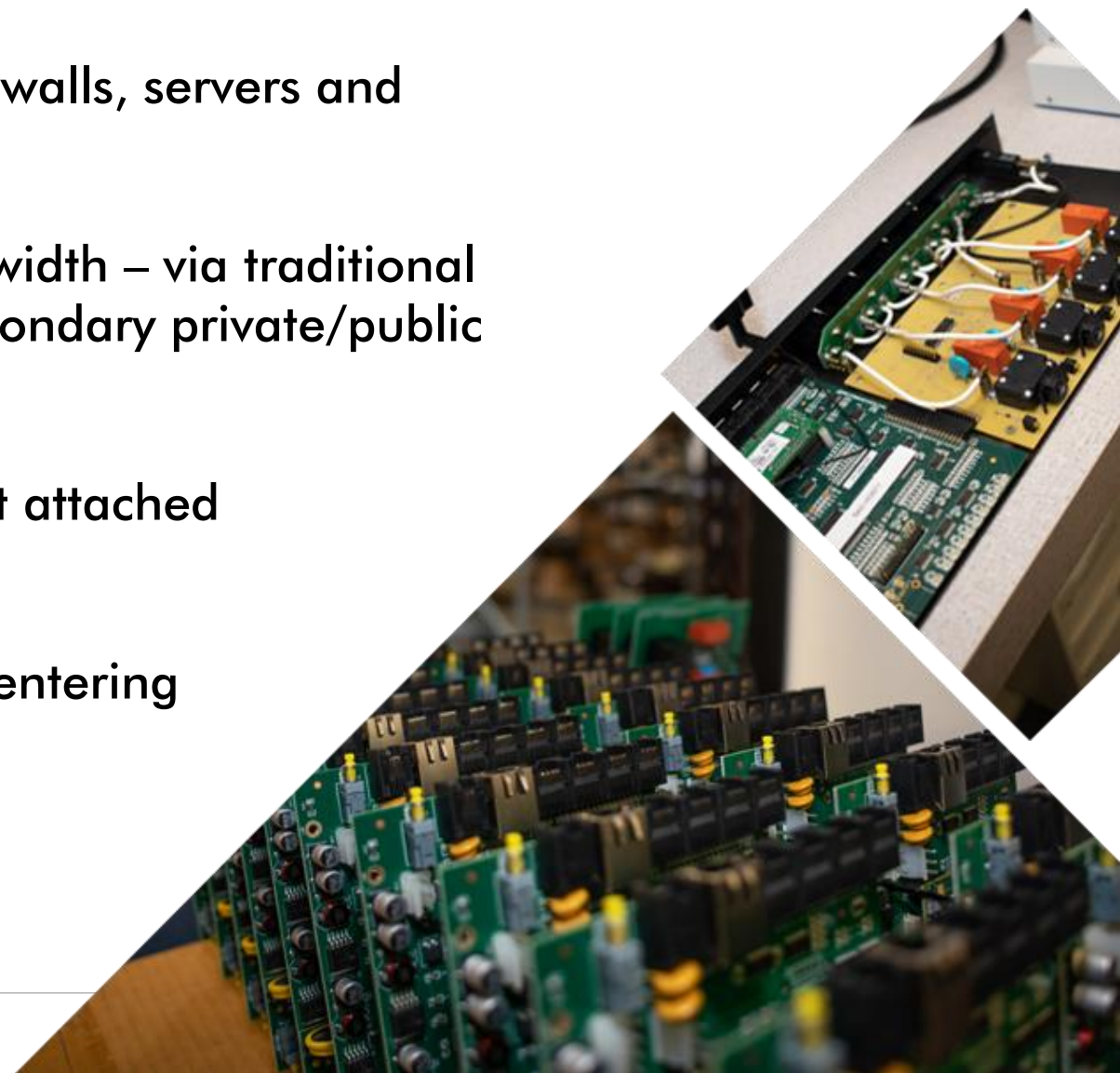


Communication Devices, Inc.

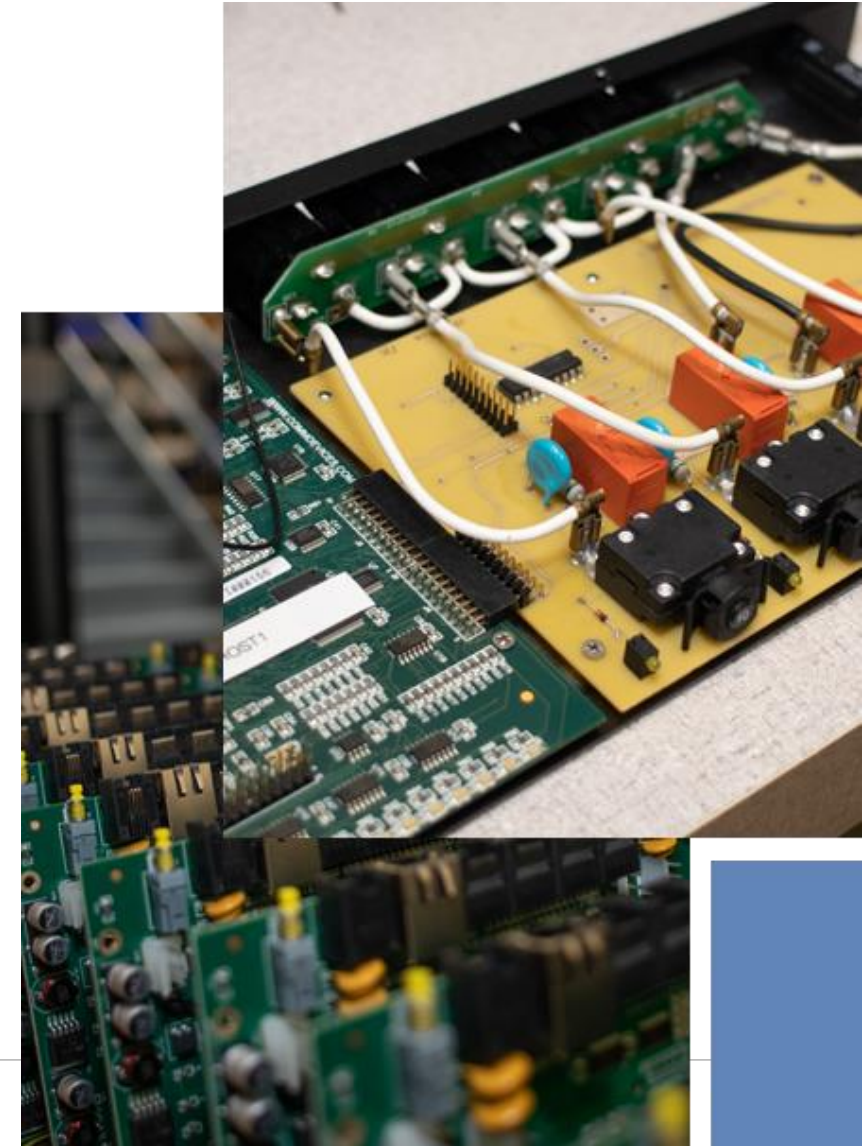
SECURE Out-of-Band Management

CDI Proprietary & Confidential

- ✓ Direct "console access" to network routers, firewalls, servers and other systems infrastructure
- ✓ Connection **OUTSIDE** the main network bandwidth – via traditional phone circuits, cellular wireless services or secondary private/public IP networks
- ✓ **Power control** as necessary to restart or reboot attached components
- ✓ Security restrictions to prevent outsiders from entering network via an **out-of-band connection**

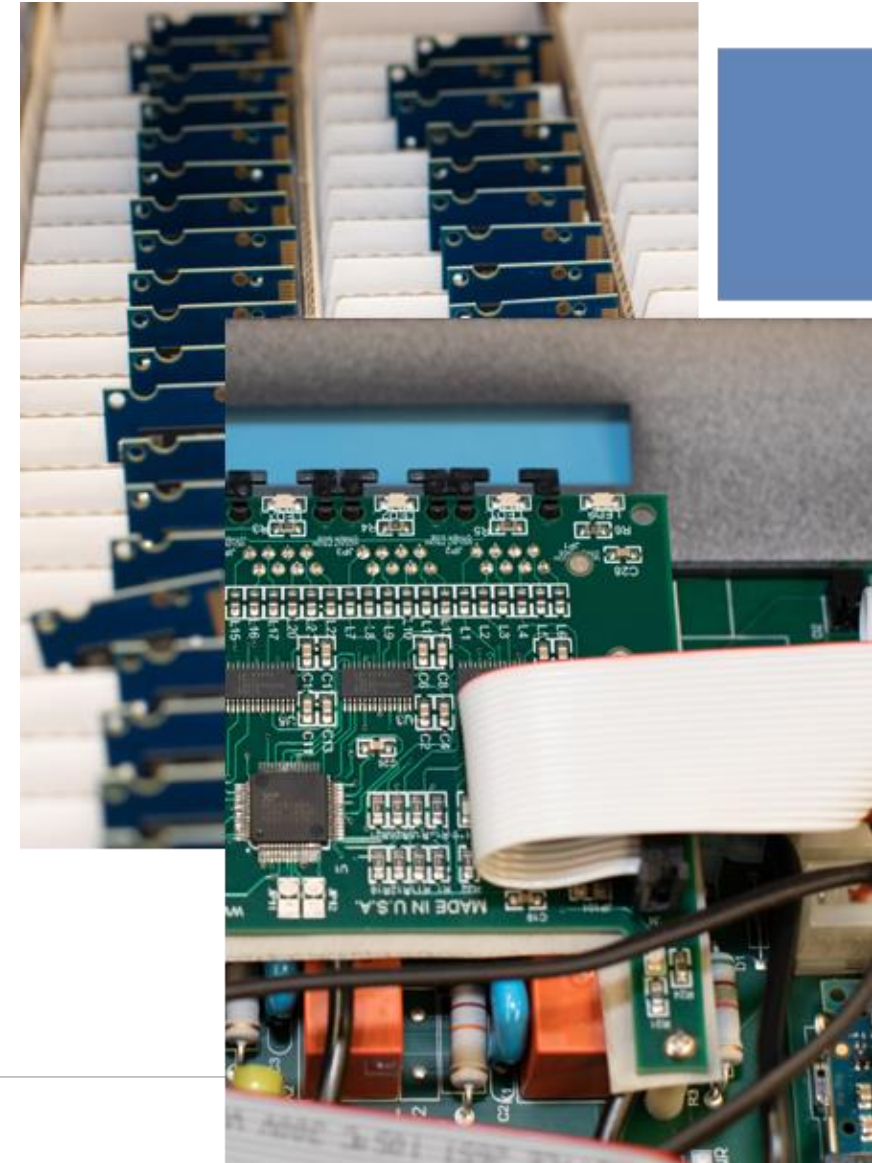


- ✓ Deploy **built-in security**, to eliminate dependency on the network or other systems for secure operation
- ✓ Gain control over **remote devices for deployment**, configuration and management
- ✓ **Respond quickly** to failure events, including underlying network failures
- ✓ **Simplify** management of devices across large-scale networks for multiple administrators





- ✓ **Port Authority 100 Series (PA-100)**
FIPS 140-2 validated and FISMA-high approved devices for government customers
- ✓ **Port Authority 200 Series (PA-200)**
PCI compliant, two-factor authentication devices for financial and commercial customers
- ✓ **Out-of-Band Manager (OBM)**
Multi-user, SQL-based management software for system configuration and secure administrator access





- ✓ Designed for all OOB access
- ✓ Bundled feature set
- ✓ Cost-effective
- ✓ Secure two-factor authentication
- ✓ RADIUS, TACACS+, SNMP at NOC.
- ✓ On-board RSA SecurID authentication
(secure access in the event of a network failure)
- ✓ Wired / Wireless / Network connectivity options
- ✓ OBM Enterprise Manager enabled



The PA200 series was designed from the ground up to provide the highest level of security at the most efficient price point. *RADIUS, ACE, or TACACS, for true Out of Band management access.*

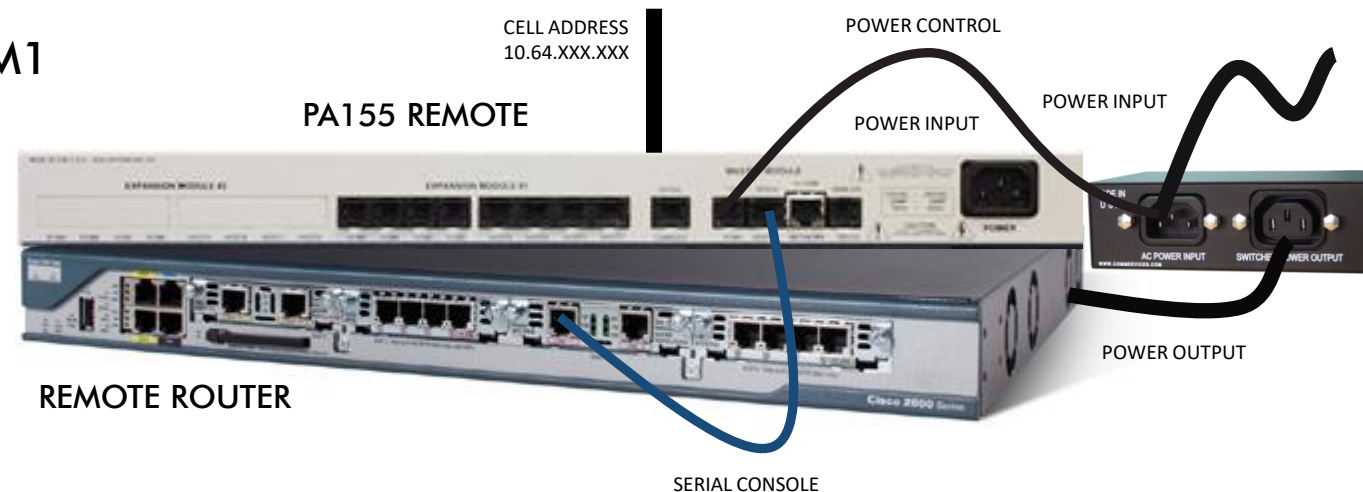
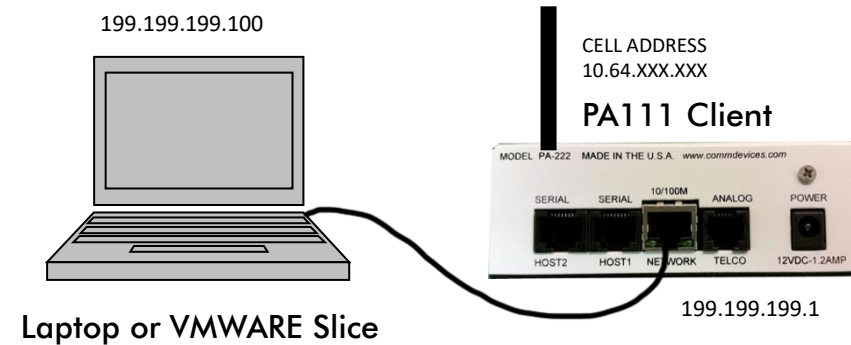
QuickStart Diagram PA-100

Communication Devices, Inc.



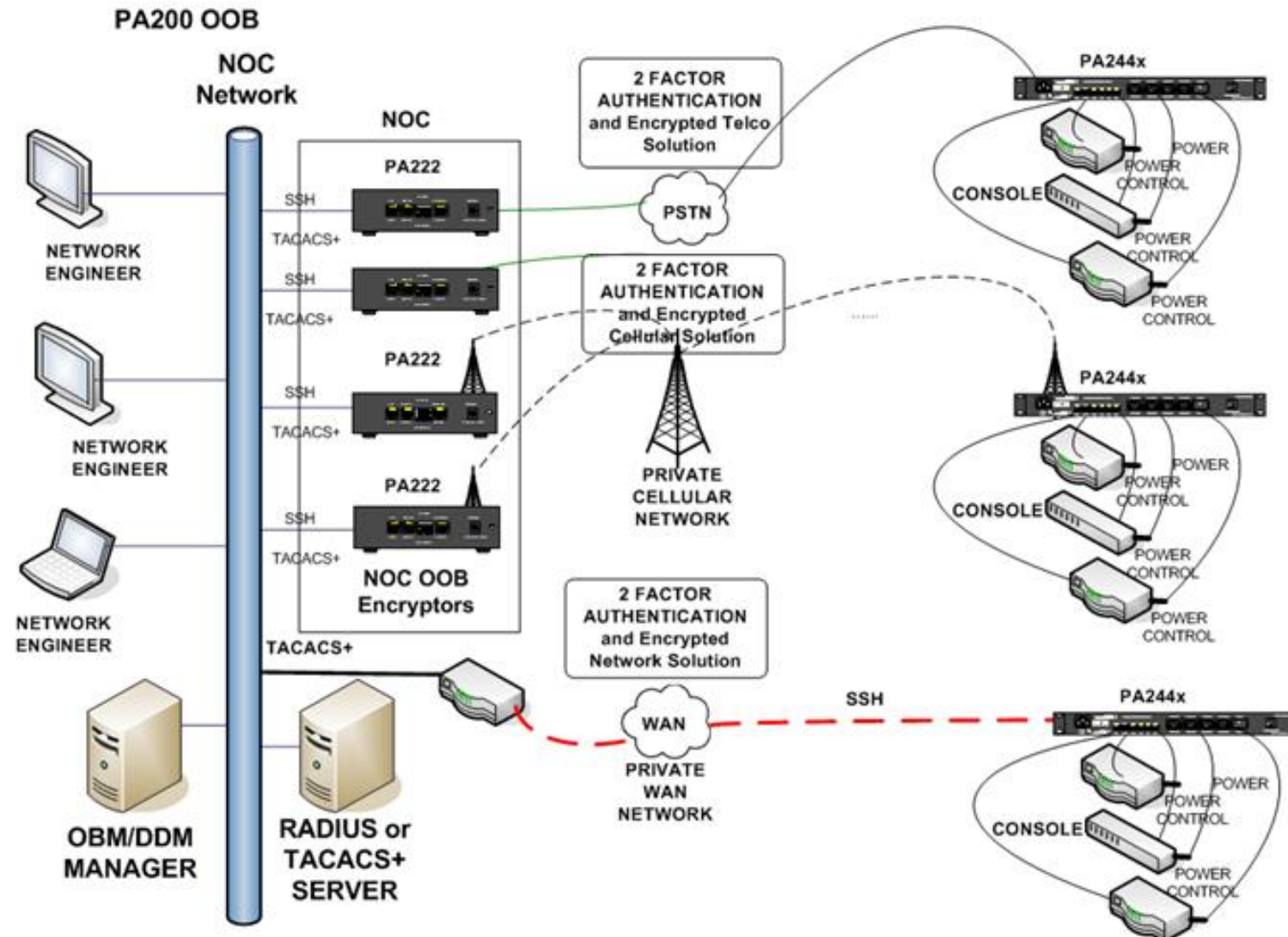
Simple Setup

- ✓ Laptop or VMWARE Slice
- ✓ Ethernet cable to PA111 Client
- ✓ Remote PA155 + PCM
- ✓ Host1 to console port – straight cable
- ✓ Power connection from PCM to router
- ✓ Control with RJ11 to PCM1

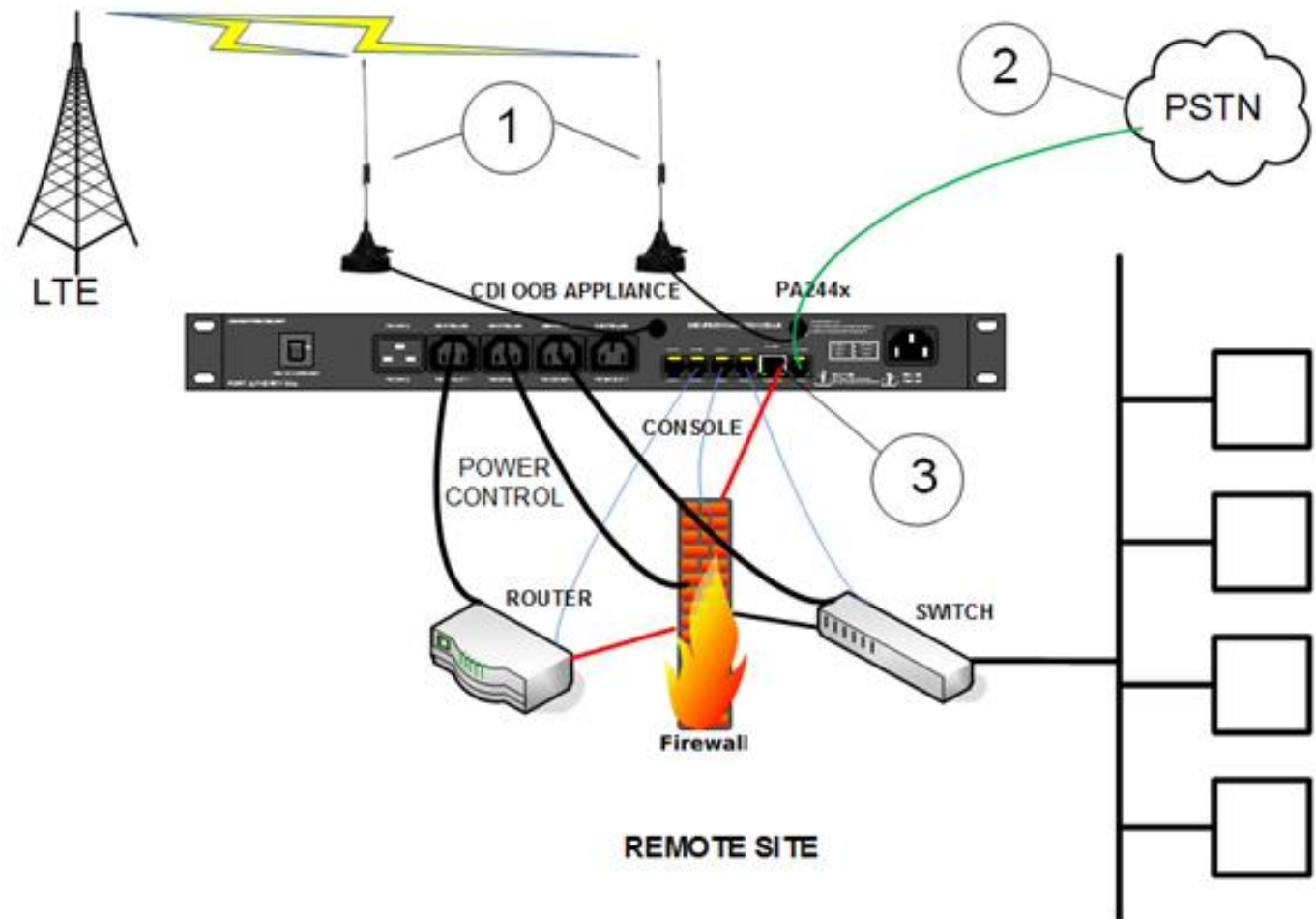


Typical System Deployment

Communication Devices, Inc.



CDI tri-aXXess PA244x Secure Out of Band Management Appliance



CDI TRIAXX devices GUARANTEE

Connectivity by three comms methods built in.

- ✓ LTE is best and most cost effective.
- ✓ TELCO – if no LTE then use existing TELCO for OOB.
- ✓ NETWORK – if no LTE and no TELCO then use NETWORK for pretty good OOB “PGOOB”. – or combine with LTE or TELCO

PA-200 Configuration Options

Communication Devices, Inc.



1 & 2 port w/ 1 & 2 external PCM



4 Port w/ 4 external PCM



4 Port w/ power outlets

8 Port w/ 8 external PCM



8 Ports, 8 Power- dual power input

Communication Devices, Inc.

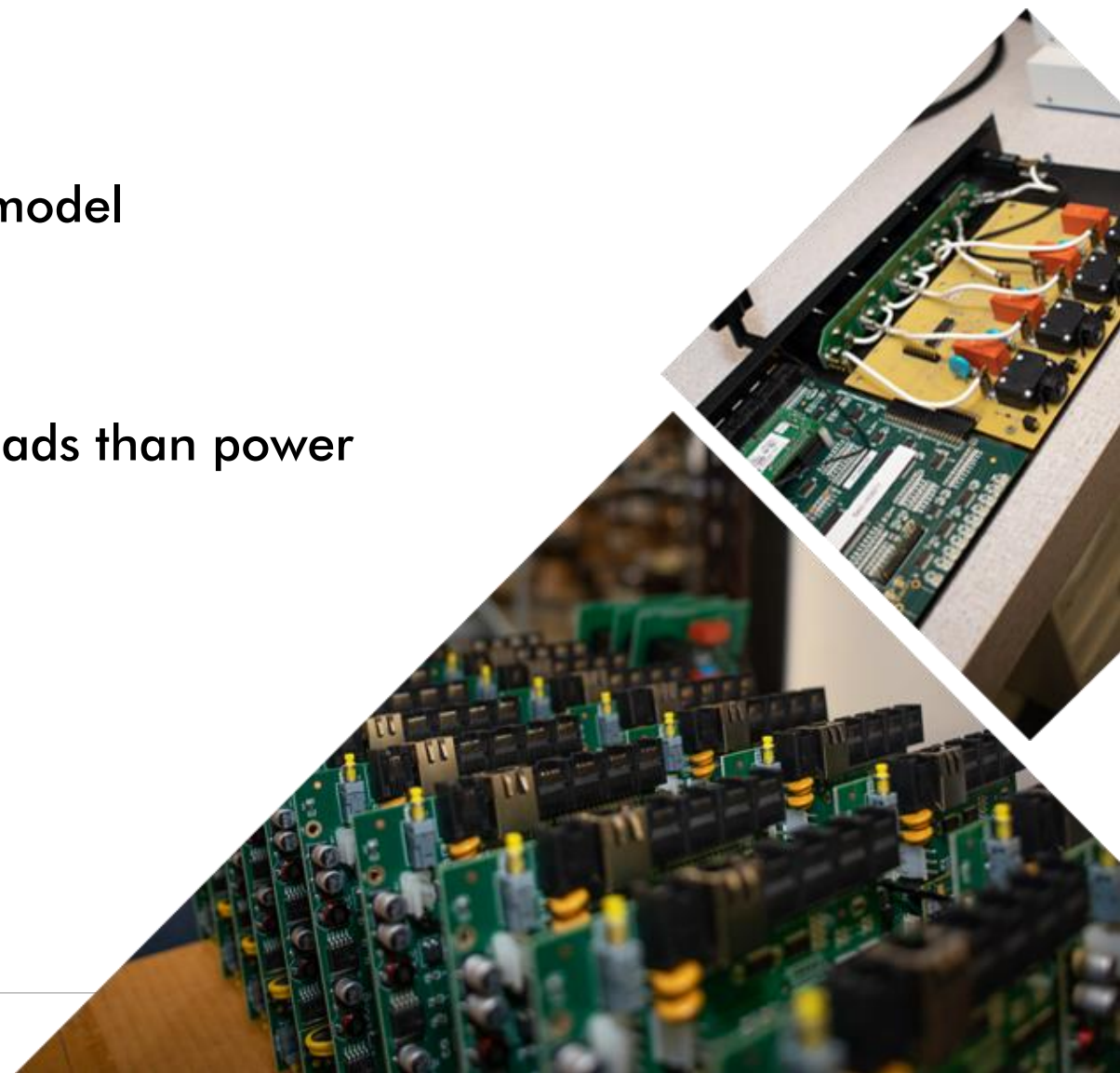


- ✓ Dual 20 AMP Power Inputs
- ✓ 8 Power Controlled Power Outlets
- ✓ Redundant Power Supplies
- ✓ 8 Serial Console OOB Ports
- ✓ Internal Cellulars LTE Module
- ✓ Internal Analog TELCO Modem
- ✓ 10/100 Network Interface
- ✓ Strong 2 Factor Authentication
- ✓ AES Data Encryption
- ✓ Enterprise Manager
- ✓ PCI, HIPPA Compliant
- ✓ Real Time Reporting

CDI PA288x Secure Out of Band Management Appliance
Tri-aXXess has CELL, TELCO and NETWORK built in



- ✓ Available for PA-100 and PA-200
- ✓ Integrated or attached, depending on device model
- ✓ Controlled via RJ-11 cable using TTL signals
- ✓ One-for-one on any circuit to handle larger loads than power strip-type switch devices
- ✓ 10amp and 20amp versions 110/230v
- ✓ Multiple international configuration options



PCM 6/10

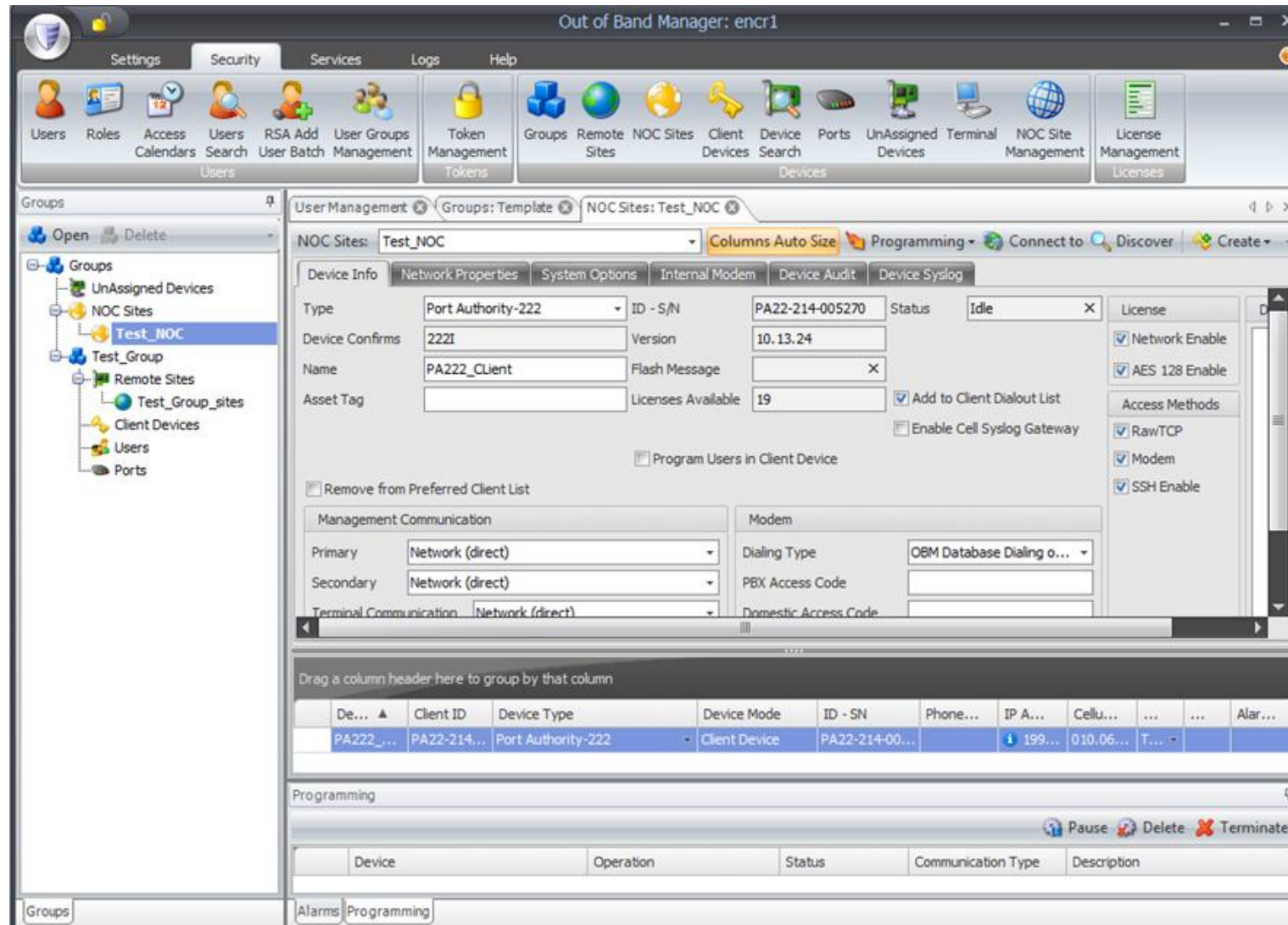
- ✓ 110vac 10amp
- ✓ 230vac 6amp



PCM 16/10

- ✓ 110vac 20amp
- ✓ 230vac 16amp





Government Customers

Communication Devices, Inc.



Managed Services Customers

Communication Devices, Inc.



Enterprise Customers

Communication Devices, Inc.





Get in touch with us...

Corporate HQ

85 Fulton Street
Boonton, NJ 07005

973-334-1980

www.commdevices.com

Personal Contact

Adam Cady
732-423-2000

adamcady@commdevices.com

Thanks! We appreciate the opportunity to work with you.