

# **SECURE Out-of-Band Management**

Communication Devices, Inc.

# Out-of-Band Management

- ▶ Direct "console access" to network routers, firewalls, servers and other systems infrastructure
- ▶ Connection OUTSIDE the main network bandwidth – via traditional phone circuits, cellular wireless services or secondary private/public IP networks
- ▶ Power control as necessary to restart or reboot attached components
- ▶ Security restrictions to prevent outsiders from entering network via an out-of-band connection

# CDI Design Principles

- ▶ Deploy built-in security, to eliminate dependency on the network or other systems for secure operation
- ▶ Gain control over remote devices for deployment, configuration and management
- ▶ Respond quickly to failure events, including underlying network failures
- ▶ Simplify management of devices across large-scale networks for multiple administrators

# CDI Product Suite

- ▶ Port Authority 100 Series (*PA-100*)
  - FIPS 140-2 validated and FISMA-high approved devices for government customers
- ▶ Port Authority 200 Series (*PA-200*)
  - PCI compliant, two-factor authentication devices for financial and commercial customers
- ▶ Out-of-Band Manager (*OBM*)
  - Multi-user, SQL-based management software for system configuration and secure administrator access



# PA-200 Commercial Series

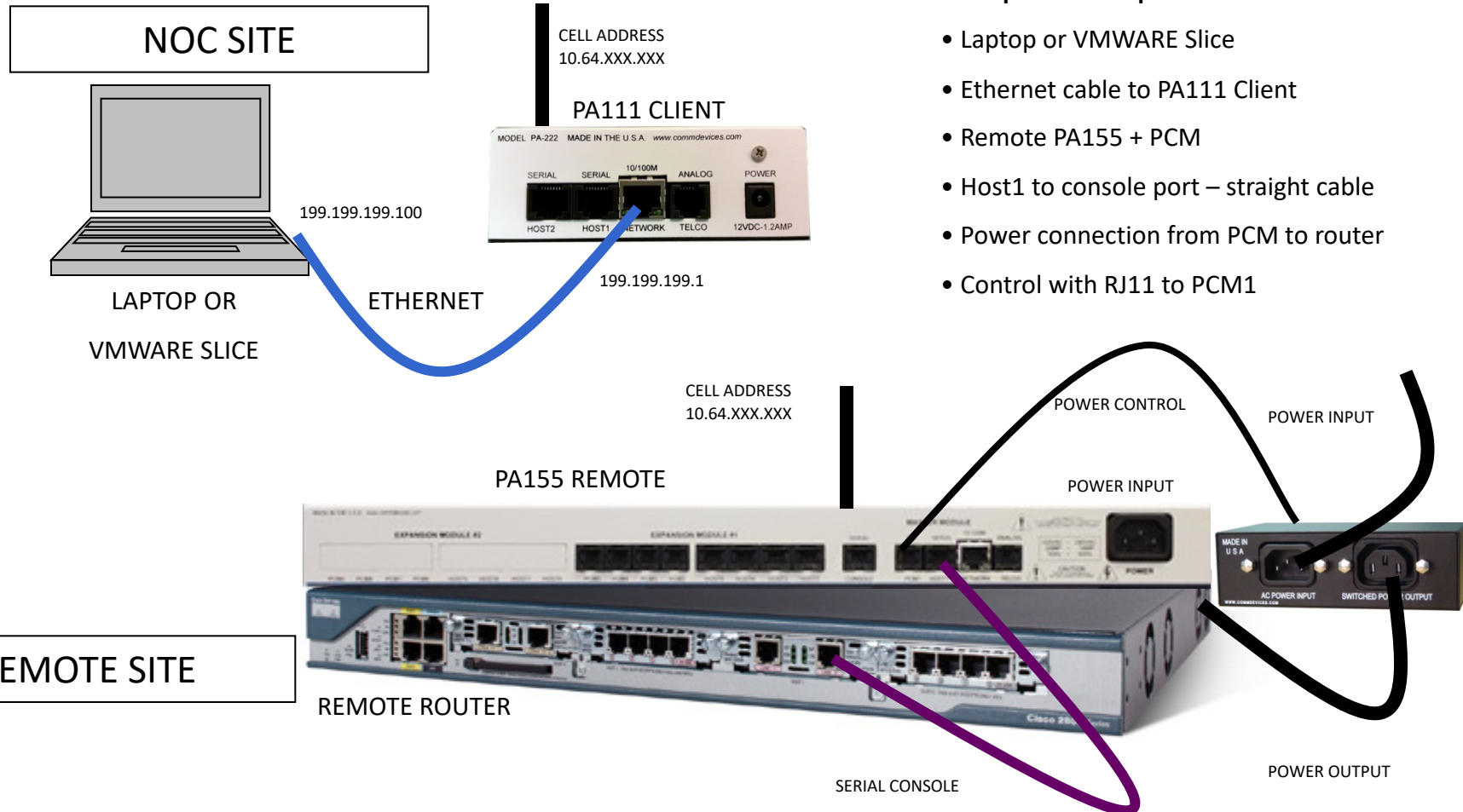
- ▶ Designed for all OOB access
- ▶ Bundled feature set
- ▶ Cost-effective
- ▶ Secure two-factor authentication
- ▶ RADIUS, TACACS+, SNMP at NOC.
- ▶ On-board RSA SecurID authentication (secure access in the event of a network failure)
- ▶ Wired / Wireless / Network connectivity options
- ▶ OBM Enterprise Manager enabled



# QuickStart Diagram PA-100

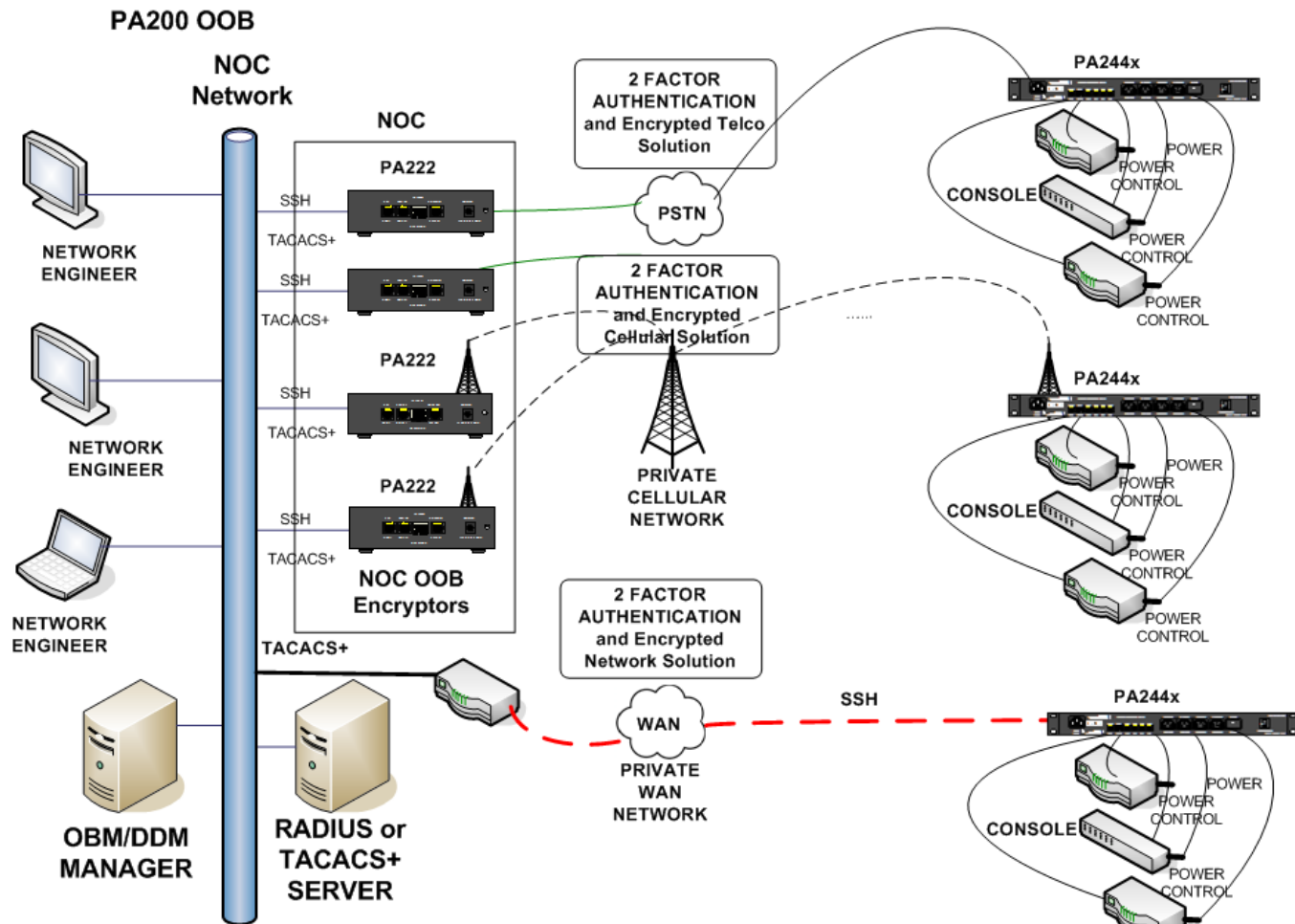
## Simple Setup

- Laptop or VMWARE Slice
- Ethernet cable to PA111 Client
- Remote PA155 + PCM
- Host1 to console port – straight cable
- Power connection from PCM to router
- Control with RJ11 to PCM1

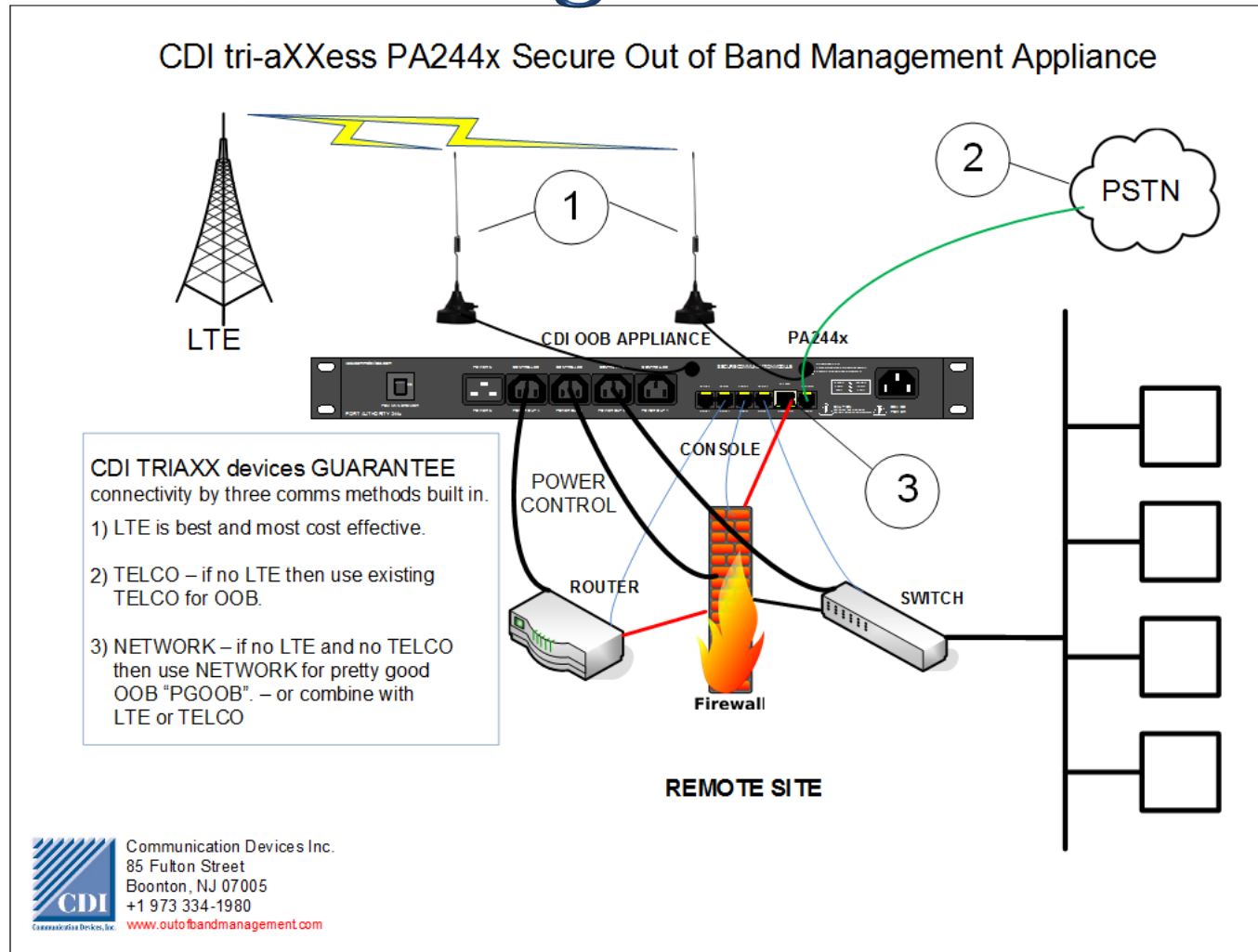




# Typical System Deployment



# Network, Analog & LTE- 1 chassis





# PA-200 Configuration Options

1 & 2 port w/ 1 & 2 external PCM



4 Port w/ 4 external PCM



4 Port w/ power outlets

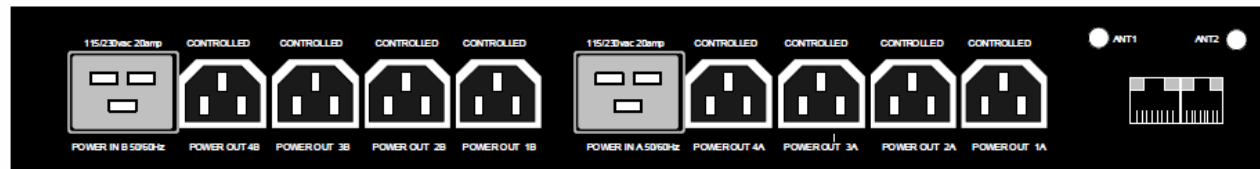
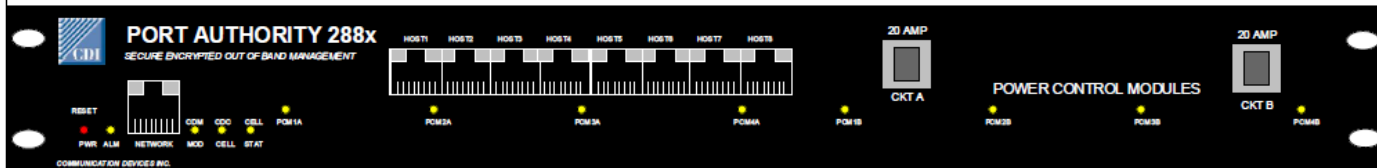


8 Port w/ 8 external PCM



# 8 Ports, 8 Power- dual power input

CDI PA288x Secure Out of Band Management Appliance  
Tri-aXXess has CELL, TELCO, and NETWORK built in



- DUAL 20 AMP POWER INPUTS
- 8 POWER CONTROLLED POWER OUTLETS
- REDUNDANT POWER SUPPLIES
- 8 SERIAL CONSOLE OOB PORTS
- INTERNAL CELLULAR LTE MODULE
- INTERNAL ANALOG TELCO MODEM
- 10/100 NETWORK INTERFACE
- STRONG 2 FACTOR AUTHENTICATION
- AES DATA ENCRYPTION
- ENTERPRISE MANAGER
- PCI , HIPAA COMPLIANT
- REAL TIME REPORTING



Communication Devices Inc.  
85 Fulton Street  
Boonton, NJ 07005  
+1 973 334-1980  
[www.outofbandmanagement.com](http://www.outofbandmanagement.com)



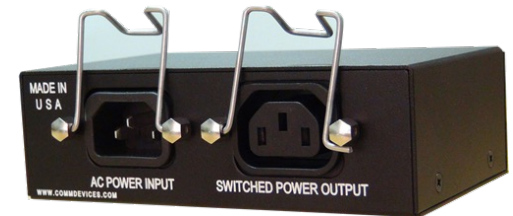
# Power Control Modules

- ▶ Available for PA-100 and PA-200
- ▶ Integrated or attached, depending on device model
- ▶ Controlled via RJ-11 cable using TTL signals
- ▶ One-for-one on any circuit to handle larger loads than power strip-type switch devices
- ▶ 10amp and 20amp versions 110/230v
- ▶ Multiple international configuration options

# Power Control Modules

## PCM 6/10

- 110vac 10amp
- 230vac 6amp

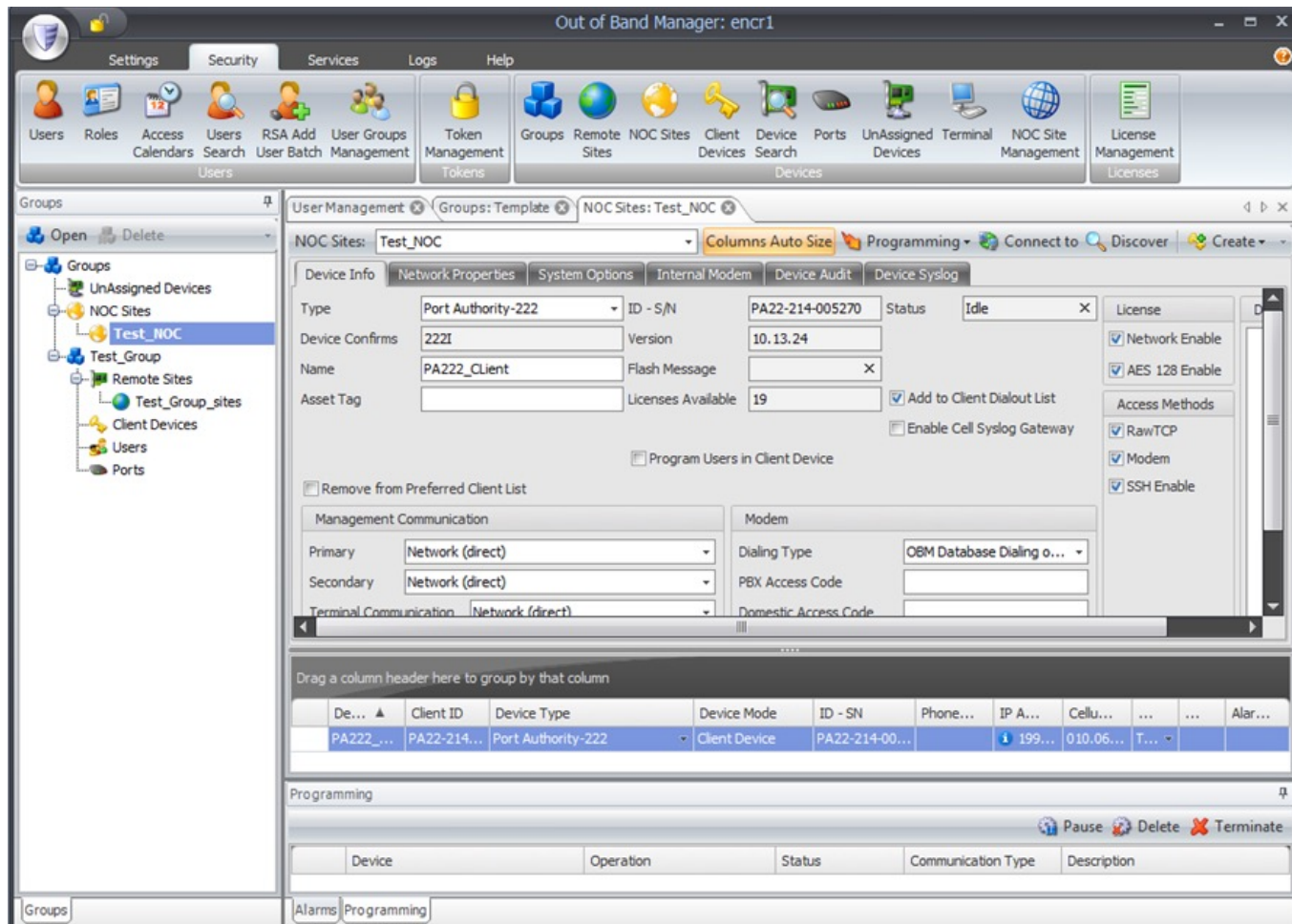


## PCM 16/10

- 110vac 20amp
- 230vac 16amp



# OBM User Interface





# Government Customers



Transportation Security  
Administration





# Managed Services Customers



# Enterprise Customers



# Communication Devices, Inc.

## ► Corporate HQ

85 Fulton Street

Boonton, NJ 07005

973-334-1980

[www.commdevices.com](http://www.commdevices.com)

## ► Personal Contact

Adam Cady

732-423-2000

[adamcady@commdevices.com](mailto:adamcady@commdevices.com)

*Thanks!*

*We appreciate the opportunity to work with you.*

