

## UNIGUARD INSTALLATION NOTES

Apply power to the CDI device before connecting any cables. The Green power LED will illuminate.

Make sure to install the “Z” bracket that holds the power connector to the body of the UniGuard to eliminate any unintentional power interruptions.

The UniGuard will initialize and then the small upper DTR modem LED will illuminate signifying the unit is ready. (This may take up to 15 seconds. If this LED does not illuminate, the unit is not functioning properly) .

Connect the host application cable as well as the Telco cable. Any CDI RJ45-RJ45 application cable has a specific end which must be connected to the CDI device. This end is clearly marked “CDI”. The straight flat grey RJ45 cables can use either end. The link port can optionally connect to a power control module with the supplied “CDI green RJ45 cable” or is an optional serial input for external communications device connection (wireless modem etc.). A 10 Meg network cable may be connected to the Network port (optional).

The large lower host DTR LED will illuminate with a correctly installed host cable and a working application. The host DTR LED being illuminated is essential to proper operation as DTR controls the dropping of a call.

The default IP address for the device is 199.199.199.0 (If IP option installed)

The device will display “USER ID>” when a test call is made to the device. There are no ID’s in the default profile.

UPPER MODEM  
DTR LED

**NOTE: THE UNIGUARD NEEDS TO BE CONFIGURED BY DDM PRIOR TO USE. CONTACT YOUR DDM ADMINISTRATOR FOR A PROGRAM DOWNLOAD.**

If the LOWER host DTR LED is not illuminated:

1. There is no CDI application cable installed
2. The wrong CDI application cable is installed.
3. The CDI application cable is installed backwards (reverse the ends).
4. The host application is not asserting DTR.
5. The host application is not powered on or not functioning properly



Communication Devices Inc.  
85 Fulton Street  
Boonton, NJ 07005  
+1 973 334-1980

[www.outofbandmanagement.com](http://www.outofbandmanagement.com)



LOWER HOST DTR  
LED

POWER LED

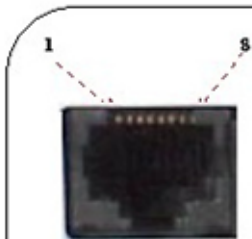
# UNIGUARD INSTALLATION

WITH NETWORK AND POWER CONTROL OPTION

NETWORK  
(OPTIONAL)

ANALOG TELCO  
CABLE

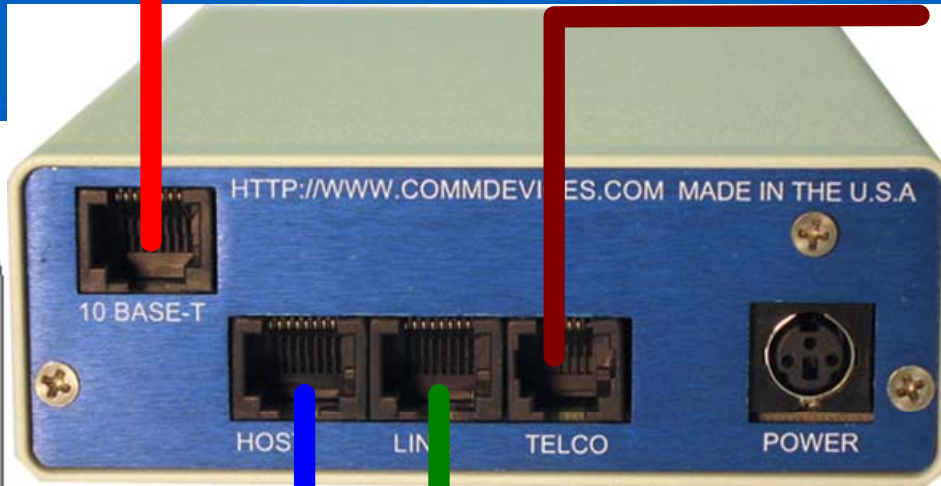
## CDI RJ45 Pinout



CDI RJ45

RJ 45 (8 pin modular) Socket connector

DCE Pinouts				
Pin	Function	Direction	DB25	
1	DSR	OUT	6	
2	CTS	OUT	5	
3	GND		7	
4	RX	IN	2	
5	TX	OUT	3	
6	DCD	OUT	8	
7	RTS	IN	4	
8	DTR	IN	20	



RJ11

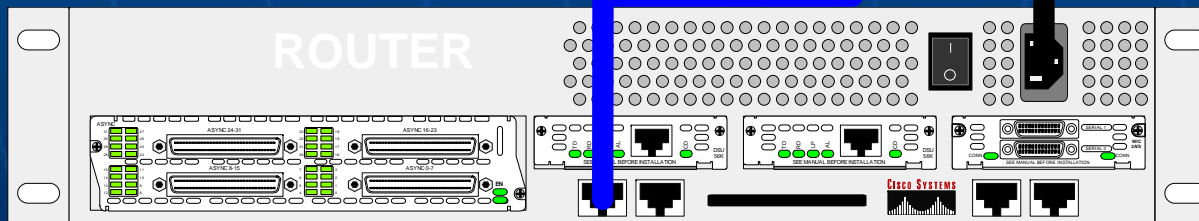


POWER SUPPLY  
"Z" BRACKET

POWER CONTROL CABLE

HOST  
APPLICATION  
CABLE

SWITCHED POWER



CONSOLE PORT



POWER  
CONTROL  
MODULE  
(optional)

MAIN  
POWER



Communication Devices Inc.  
85 Fulton Street  
Boonton, NJ 07005  
+1 973 334-1980