



<http://www.commddevices.com>

Port Authority SAM-11

Secure Out of Band Management Modem
RSA-AES 2 factor authentication built in

- ✓ RSA certified AES authentication
- ✓ NIST certified AES management
- ✓ Internal Modem Standard
- ✓ All config data is AES encrypted
- ✓ Self-contained Database
- ✓ Centrally Managed
- ✓ Power Control Capable
- ✓ Stand Alone



Port Authority SAM-11 (1 Port)

The Problem

Access to console ports on Routers, Firewalls, Network Appliances, etc., cannot be protected by network security when out of band access is required. Secure Out of Band Management and Network security are mutually exclusive events.

The Solution

The SAM-11 connects directly to console ports and provides the highest level of authentication regardless of the status of the network. This is done by maintaining an internal security database that is updated by a "patented" central database manager on an "as needed" basis. This internal database provides fast, reliable, AES, two factor authentication. Hardware Client authentication can be enabled by using a SAM-11 or SAM-22 Client(s) at the NOC center.

RSA Secured

The SAM-11 has the ability to authenticate RSA tokens "on board" without needing access to the network. This allows for secure two factor AES authentication over dial-up when the network is malfunctioning.

Network Capability

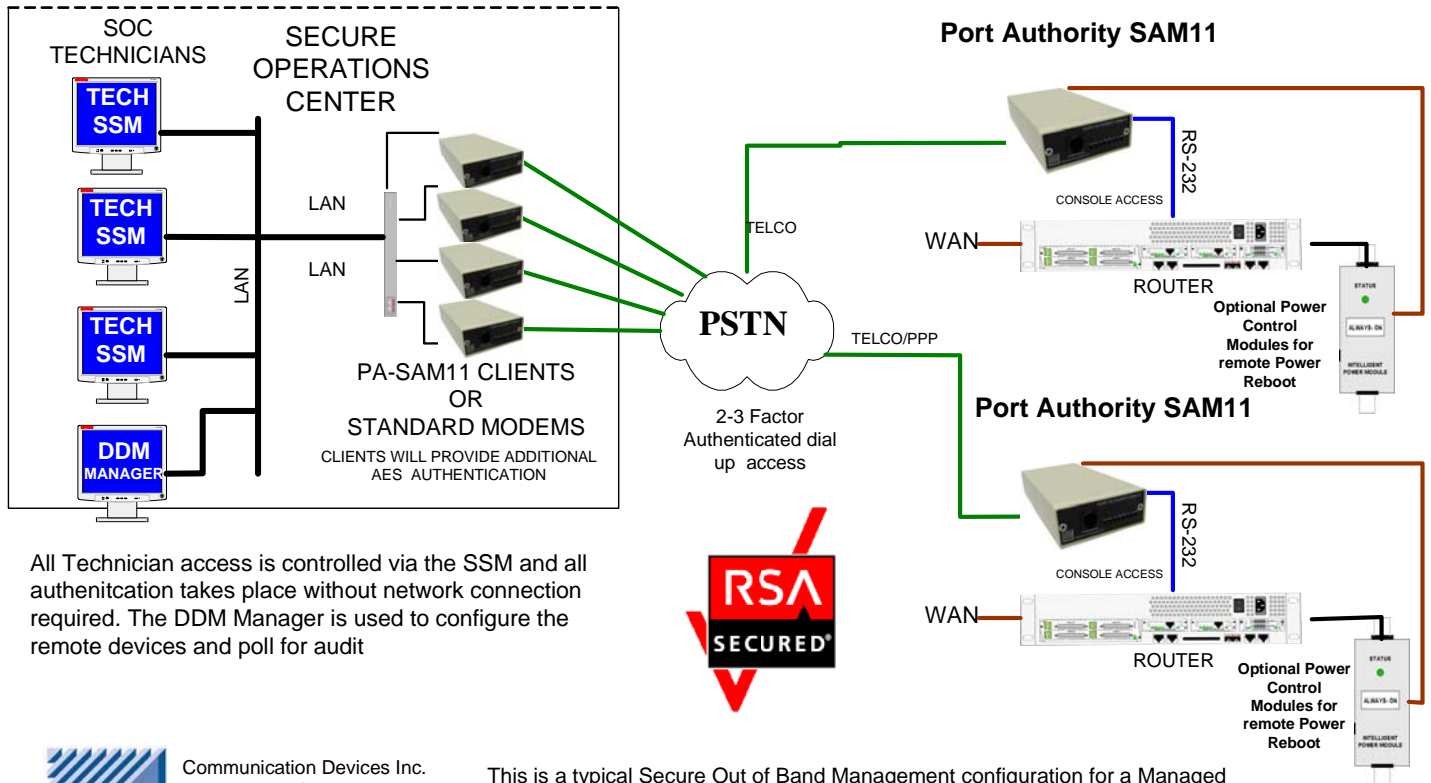
The Port Authority-SAM11 is a dial-up only product. There is no network capability.

Security Management

DDM, Distributed Database Manager, can manage an unlimited number of CDI devices remotely from a single(ODBC) or multiple(SQL) workstations. This eliminates the need to update each unit individually when there is a database change. Audit trail reports are extracted automatically. All DDM communication is AES encrypted to ensure protection of the database information.

<http://www.outofbandmanagement.com>

SECURE RSA-AES OUT OF BAND MANAGEMENT OVER DIAL-UP



All Technician access is controlled via the SSM and all authentication takes place without network connection required. The DDM Manager is used to configure the remote devices and poll for audit



Communication Devices Inc.
1 Forstmann Court
Clifton, NJ 07011
1.973.772.6997
www.commddevices.com

This is a typical Secure Out of Band Management configuration for a Managed Security Provider. The PA-SAM11 is connected to the console port of a Router. The SOC technician can RSA-AES dial-up to the PA-SAM11. This will then allow console access. At no time is the PA-SAM11 relying on network security to operate as the network is in question when the device is used.

Network Capabilities

The Port Authority-SAM11 is a dial-up only product. There is no network capability.

Connections

- Power (mini-DIN)
- 1 RJ11 Telco
- 1 RJ45 RS232 serial
- 1 RJ11 Power Control

Indicators

- Power
- Modem: TX,RX,RDY,RI/DCD
- Serial: DTR, DCD

Part Numbers

PA-SAM11	Standard 1 port unit 1 power control No network port available on PA-SAM11
PA-SAM22	Standard 2 port unit 2 power control 10/100 network interface.
PA-SAM44	Standard 4 port unit 4 power control 10/100 network interface.

PA-SAM11 Specifications

Length	5.5 inches (14 cm)
Width	2.75 inches (7 cm)
Height	1 inch (2.54 cm)
Weight	1 pounds (.45 Kilogram)
Power	110VAC .3 AMP, 220VAC .15 AMP
Misc.	NIST AES, RSA, FCC PART 15 FCC PART 68, CE
Global	Add -US, -UK, -EU , for international power cords